

SkillsUSA

2015 Contest Projects

Cabinetmaking

Click the “Print this Section” button above to automatically print the specifications for this contest. Make sure your printer is turned on before pressing the button.



AWI ARCHITECTURAL
WOODWORK
INSTITUTE

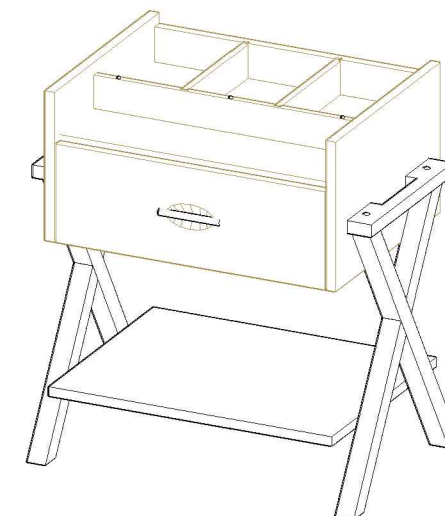
CONTRIBUTING AWI MEMBER COMPANIES:

ALLEN MILLWORK - WICHITA, KS
FREMONT INTERIORS, INC. - CARMEL, IN
OHIO VALLEY DOOR CO. - NEW ALBANY, IN
ROWLAND WOODWORKING, INC. - HIGH POINT, NC
TECHNIQUE MANUFACTURING, INC. - HUTCHINSON, KS
VOLPE MILLWORK, INC. - CLEVELAND, OH
LOUISVILLE LUMBER AND MILLWORK - LOUISVILLE, KY
COHEN ARCHITECTURAL WOODWORKING - ST. JAMES, MO

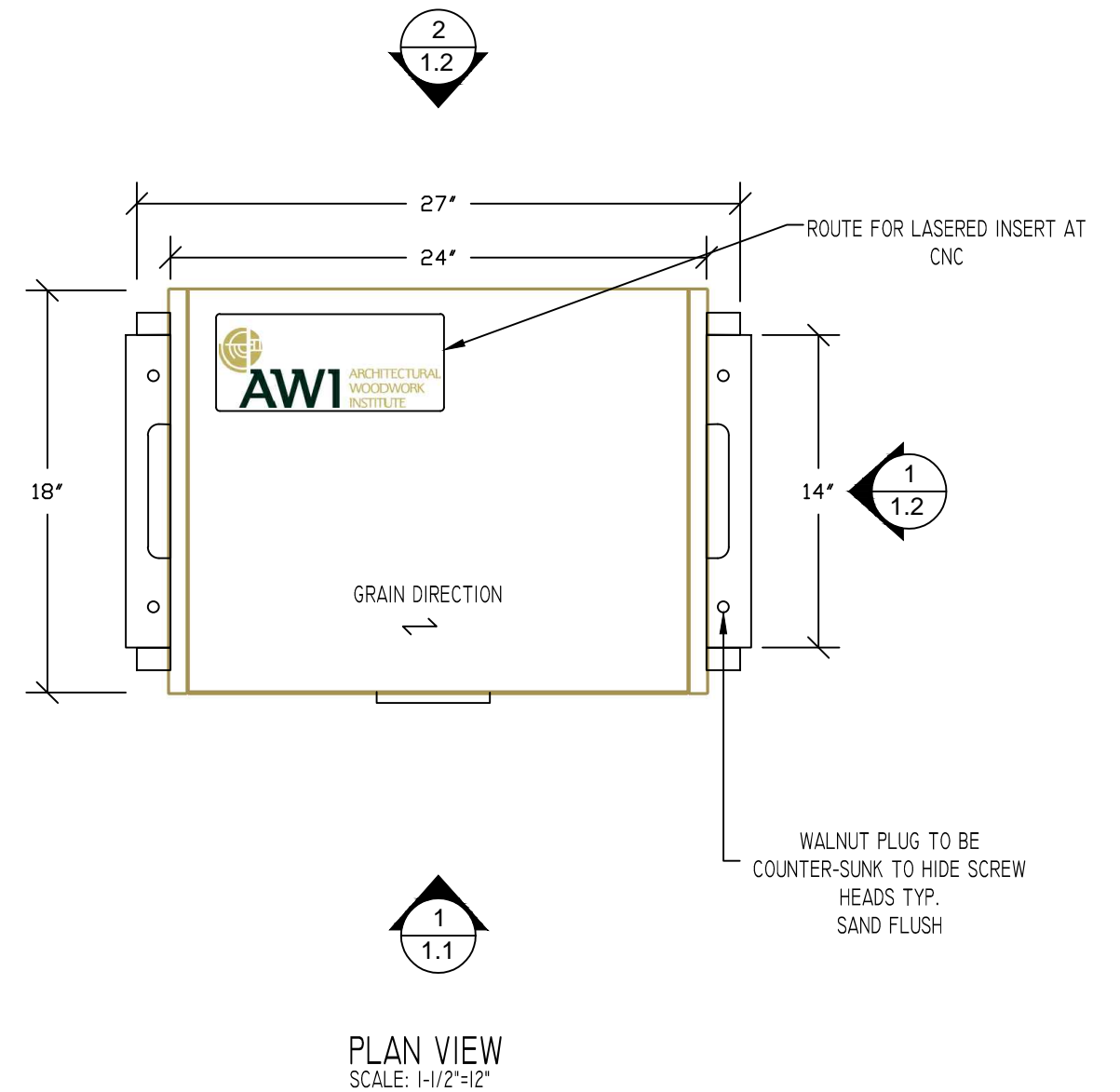
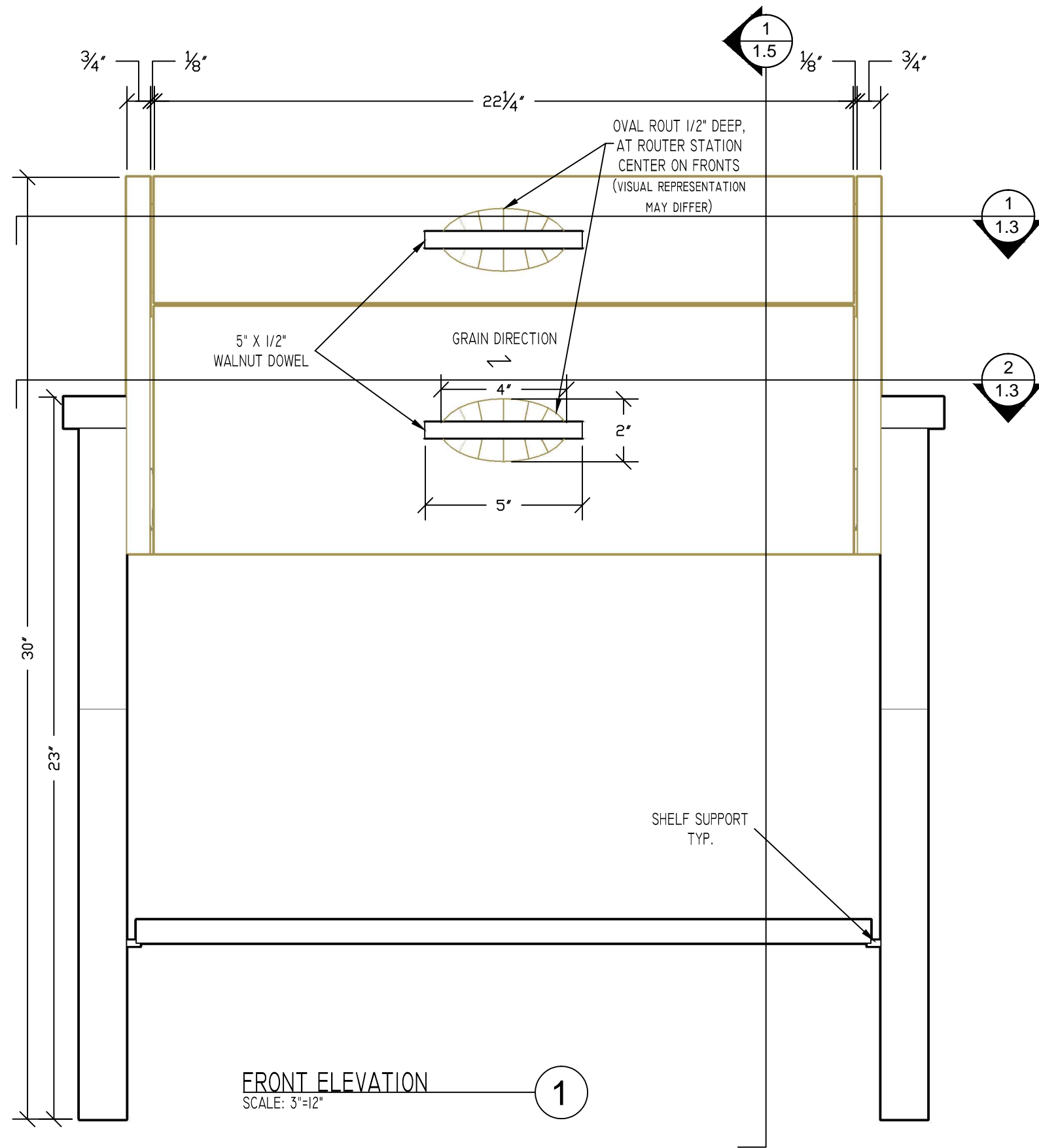
THE FOLLOWING COMPANIES PROVIDED SERVICES, EQUIPMENT, AND PRODUCTS FOR THIS CONTEST:

SAW STOP
RICHELIEU - INDIANAPOLIS, IN and HIGH POINT, NC
FLEXIBLE MATERIALS - JEFFERSONVILLE, IN
BLUM - KANSAS CITY, KS
SHIELS LUMBER - CINCINNATI, OH
AMERICAN PACKAGING CORP.
DEWALT POWER TOOLS
IRWIN INDUSTRIAL TOOLS
WOODWORK CAREER ALLIANCE OF NORTH AMERICA - www.woodworkcareer.org
HOOD DISTRIBUTION/McEWEN GROUP
OLON INDUSTRIES - WASHINGTON, IN
HAFELE - HIGH POINT, NC
EDWARD B. MUELLER - CINCINNATI, OH
STILES MACHINERY - GRAND RAPIDS, MI
STAR MOULING & TRIM COMPANY - BEDFORD PARK, IL

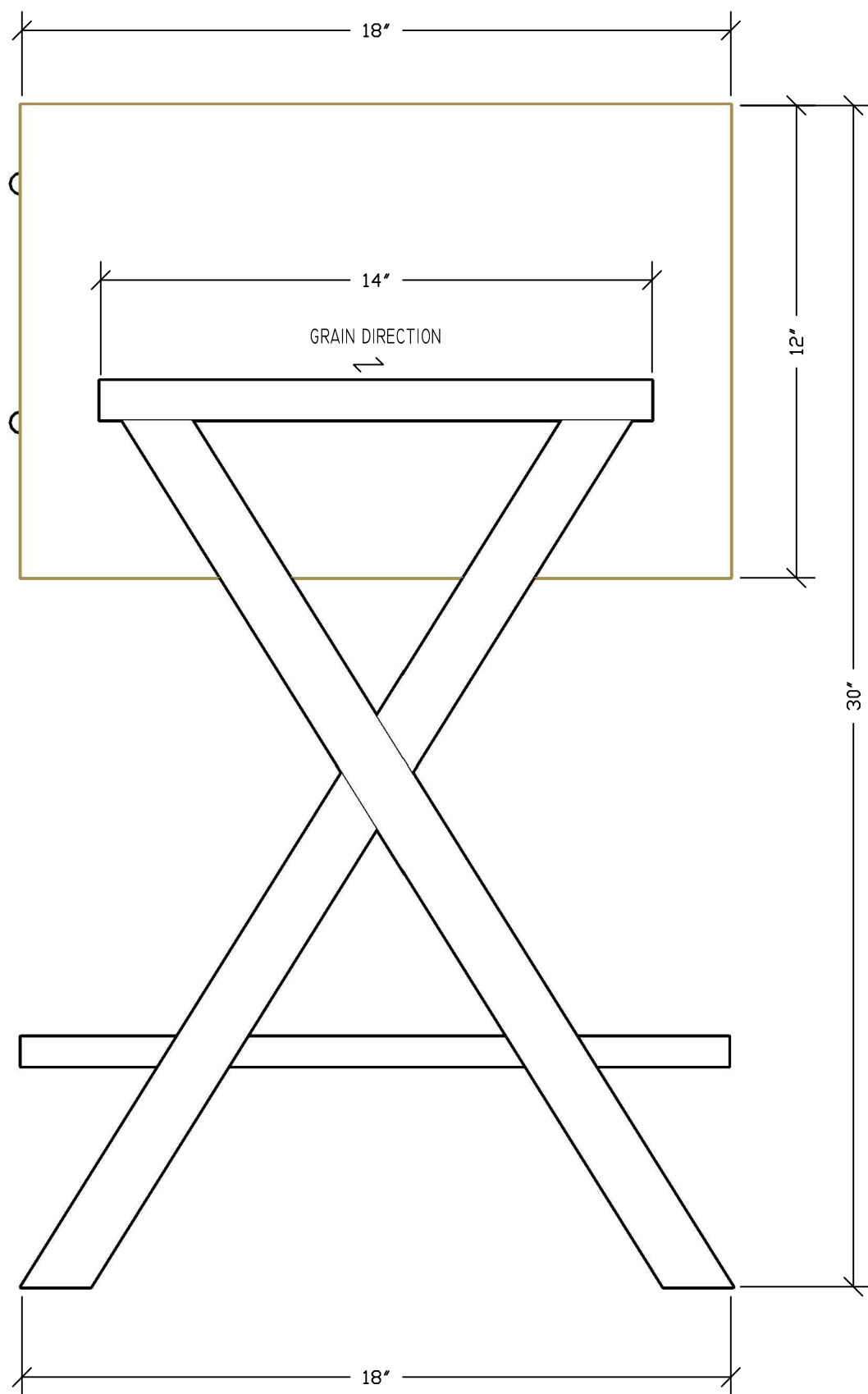
CONTESTANT#



2015 SkillsUSA NLSC		
PROJECT ACCENT TABLE		
DRAWN BY: AJA	DATE: JUNE 2015	SCALE: N/A
NOTES		PAGE COVER

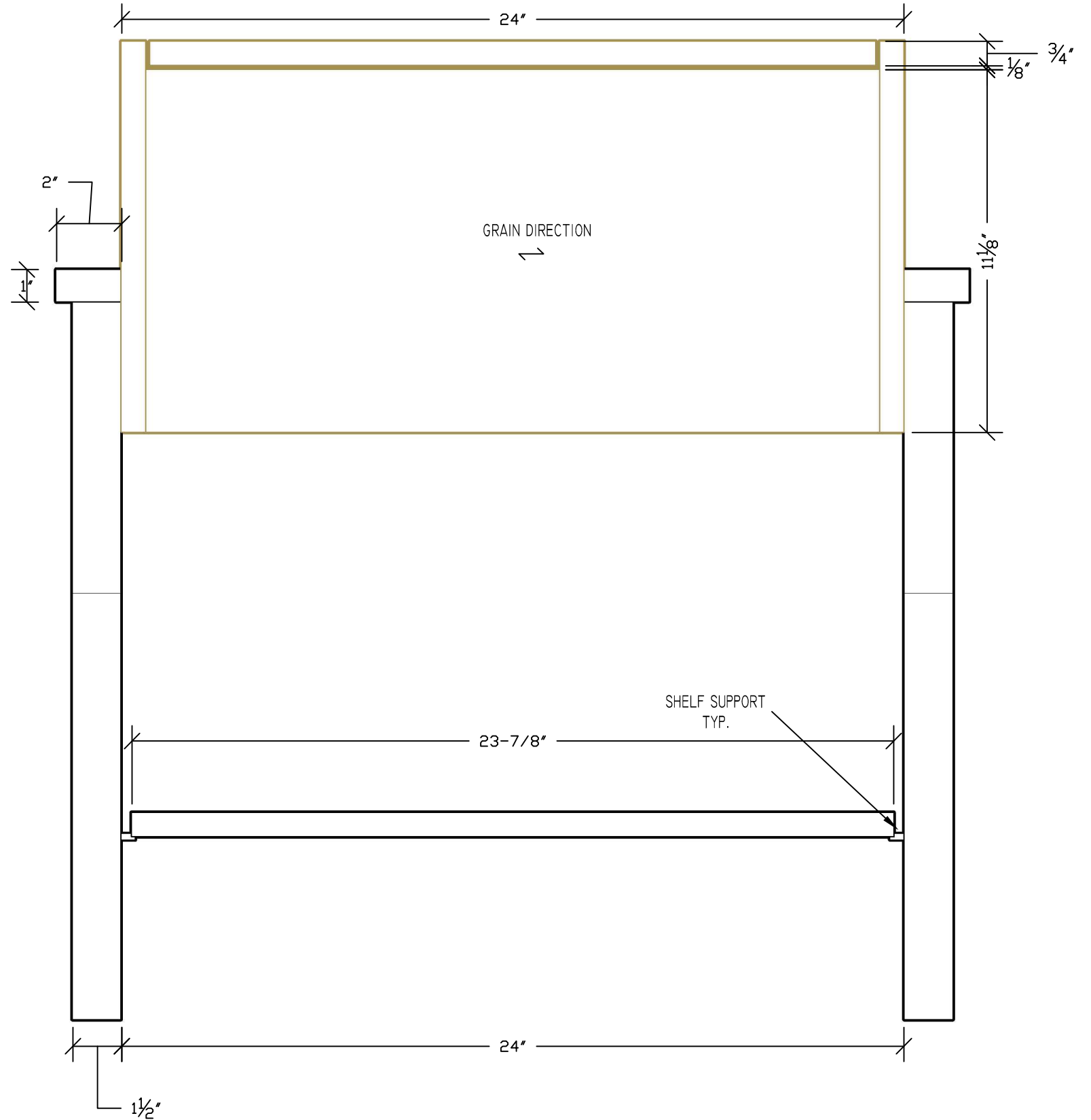


2015 SkillsUSA NLSC		
PROJECT ACCENT TABLE		
DRAWN BY: AJA	DATE: JUNE 2015	SCALE: N/A
NOTES		PAGE 1.1



SIDE ELEVATION
SCALE: 1-1/2"=12"

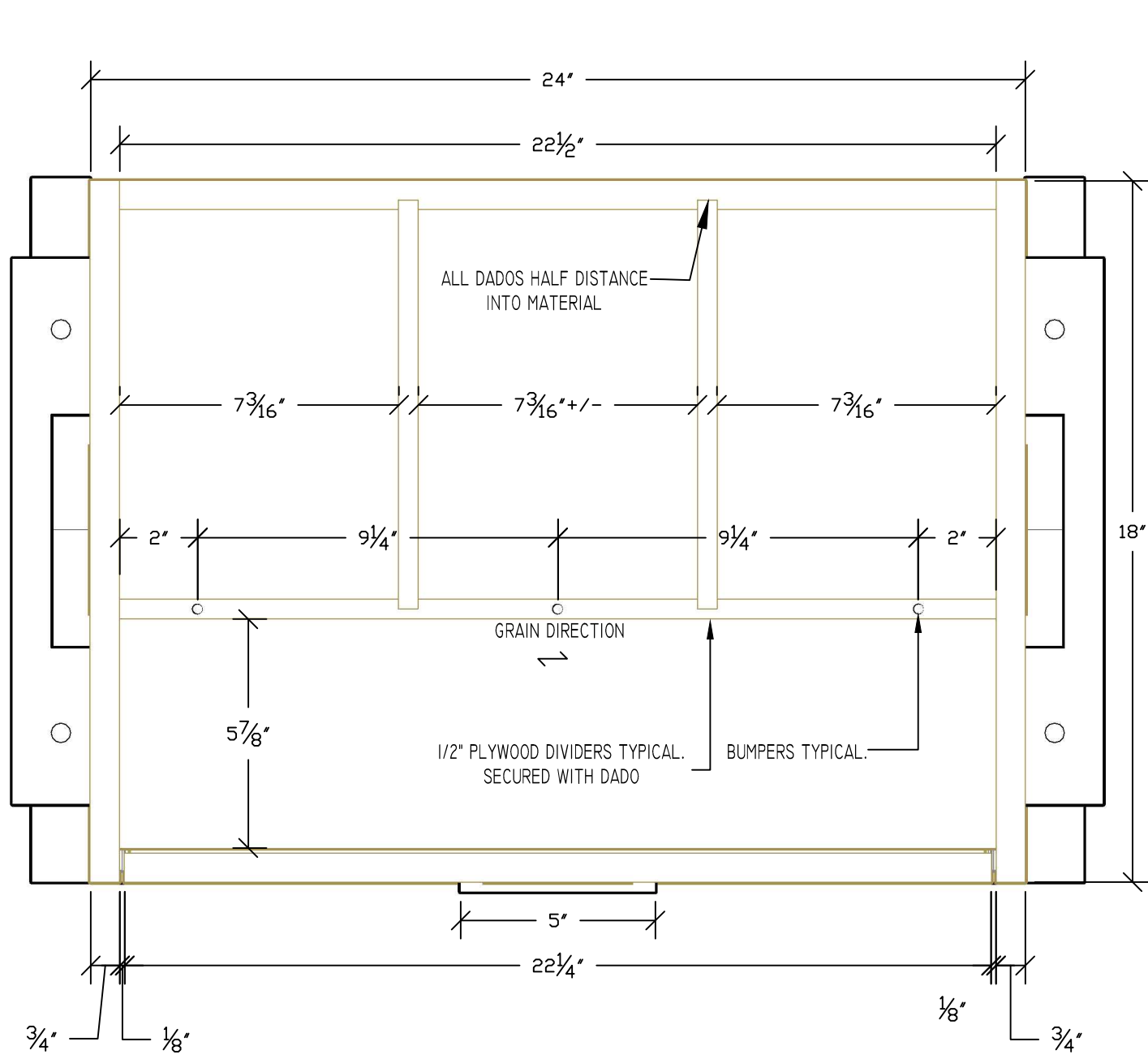
1



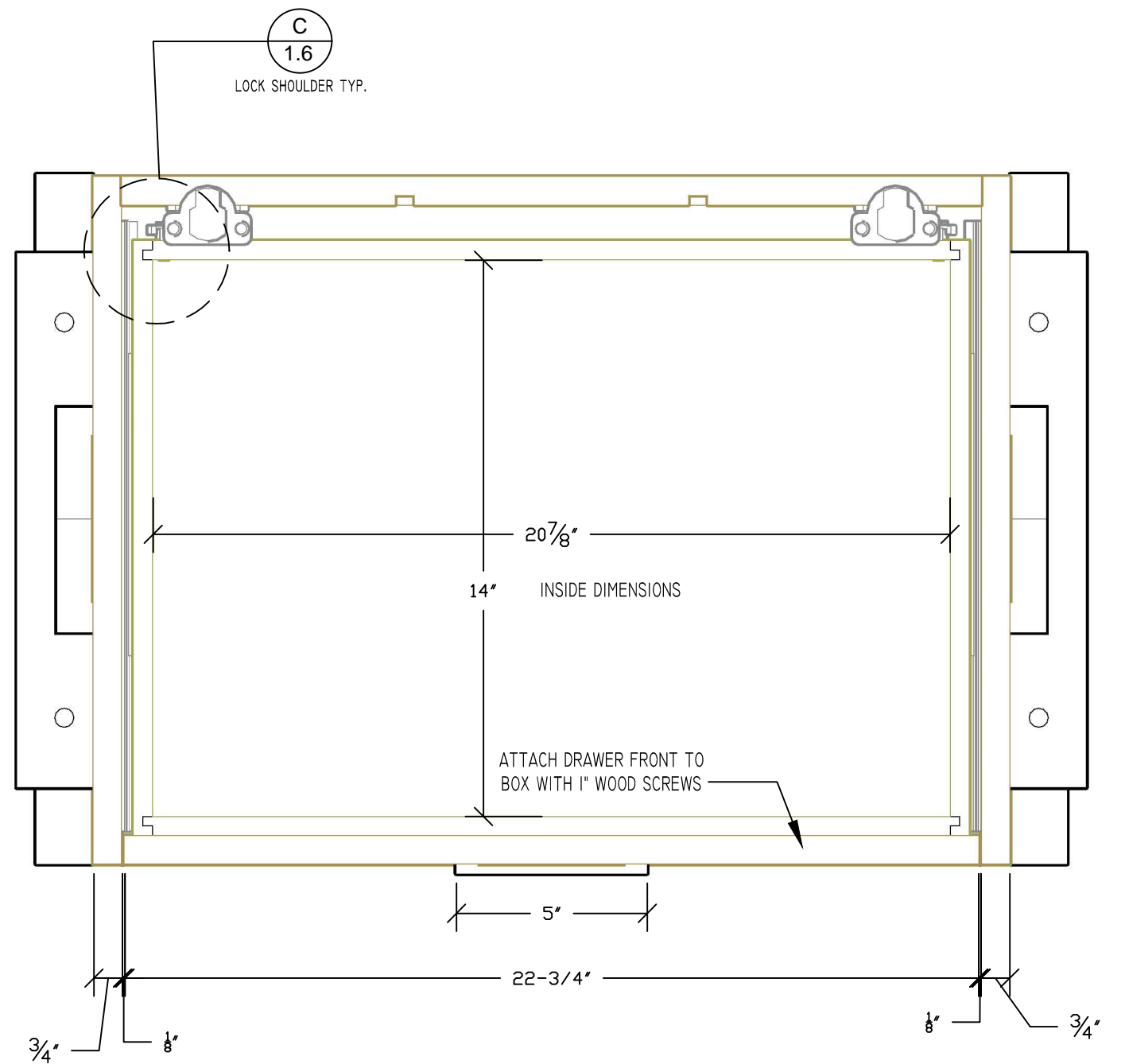
REAR ELEVATION
SCALE: 1-1/2"=12"

2

2015 SkillsUSA NLSC		
PROJECT ACCENT TABLE		
DRAWN BY: AJA	DATE: JUNE 2015	SCALE: N/A
NOTES		PAGE 1.2



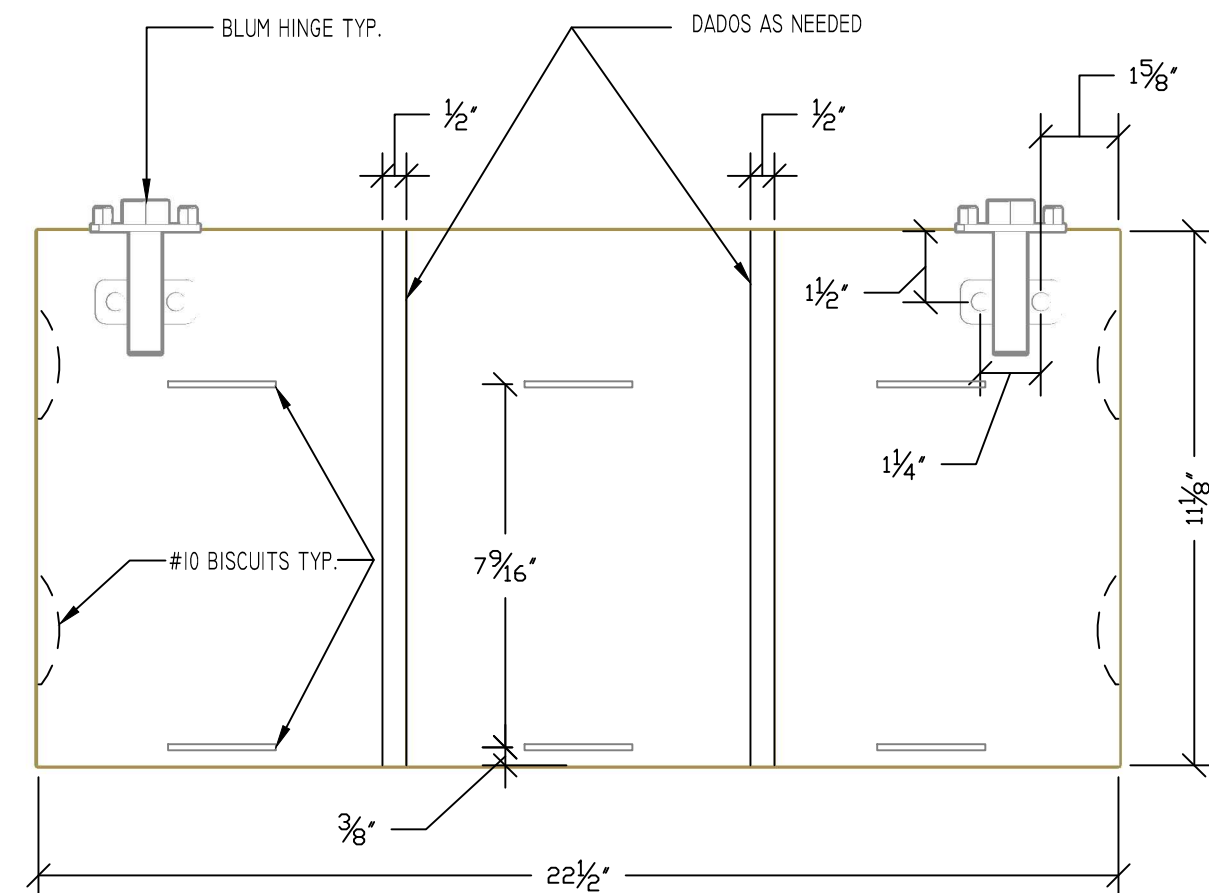
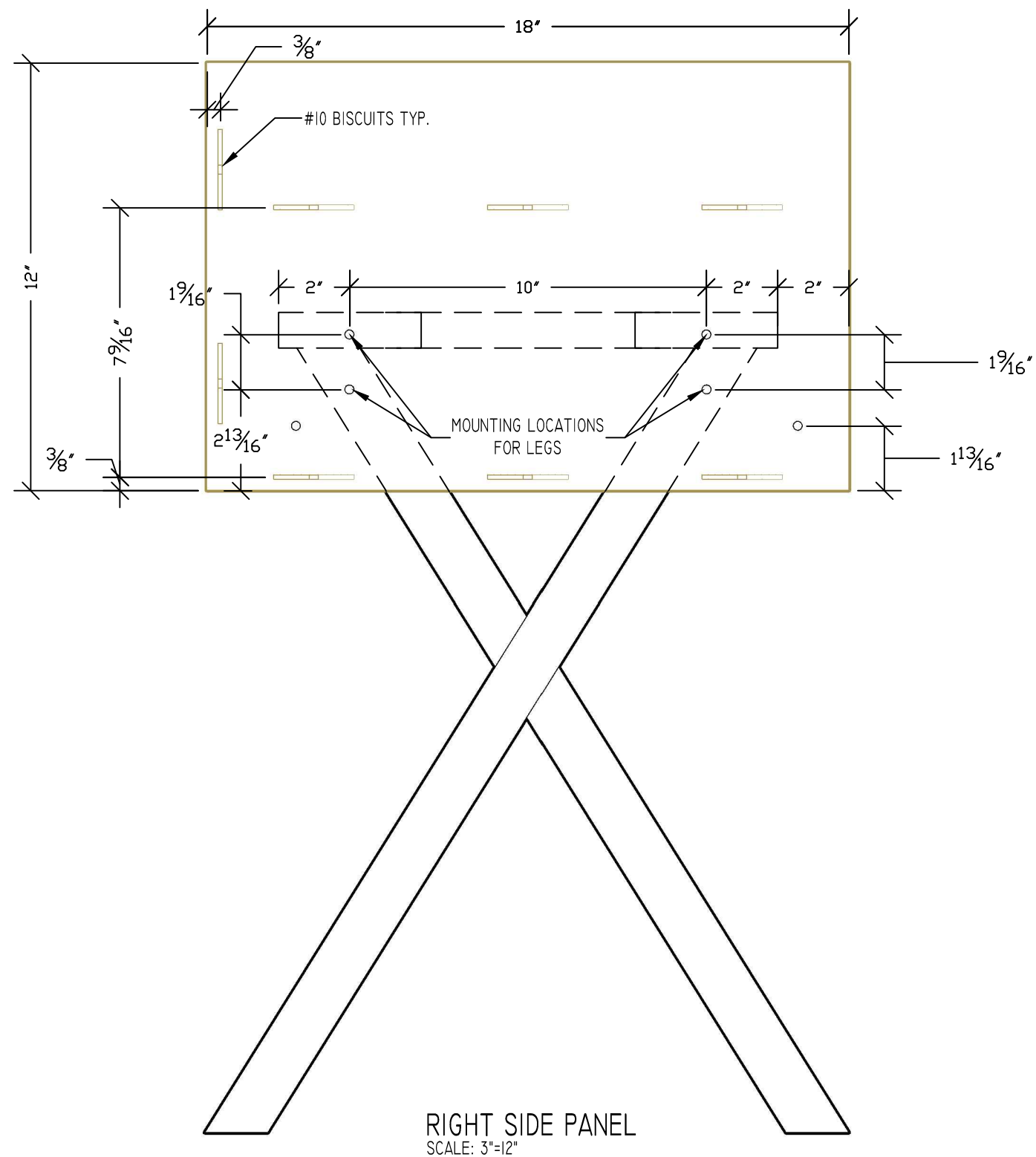
UPPER HORIZONTAL SECTION 1
SCALE: 1-1/2"=12"



LOWER HORIZONTAL SECTION 2
SCALE: 1-1/2"=12"

*NOTE: EDGEBAND ALL EXPOSED EDGES

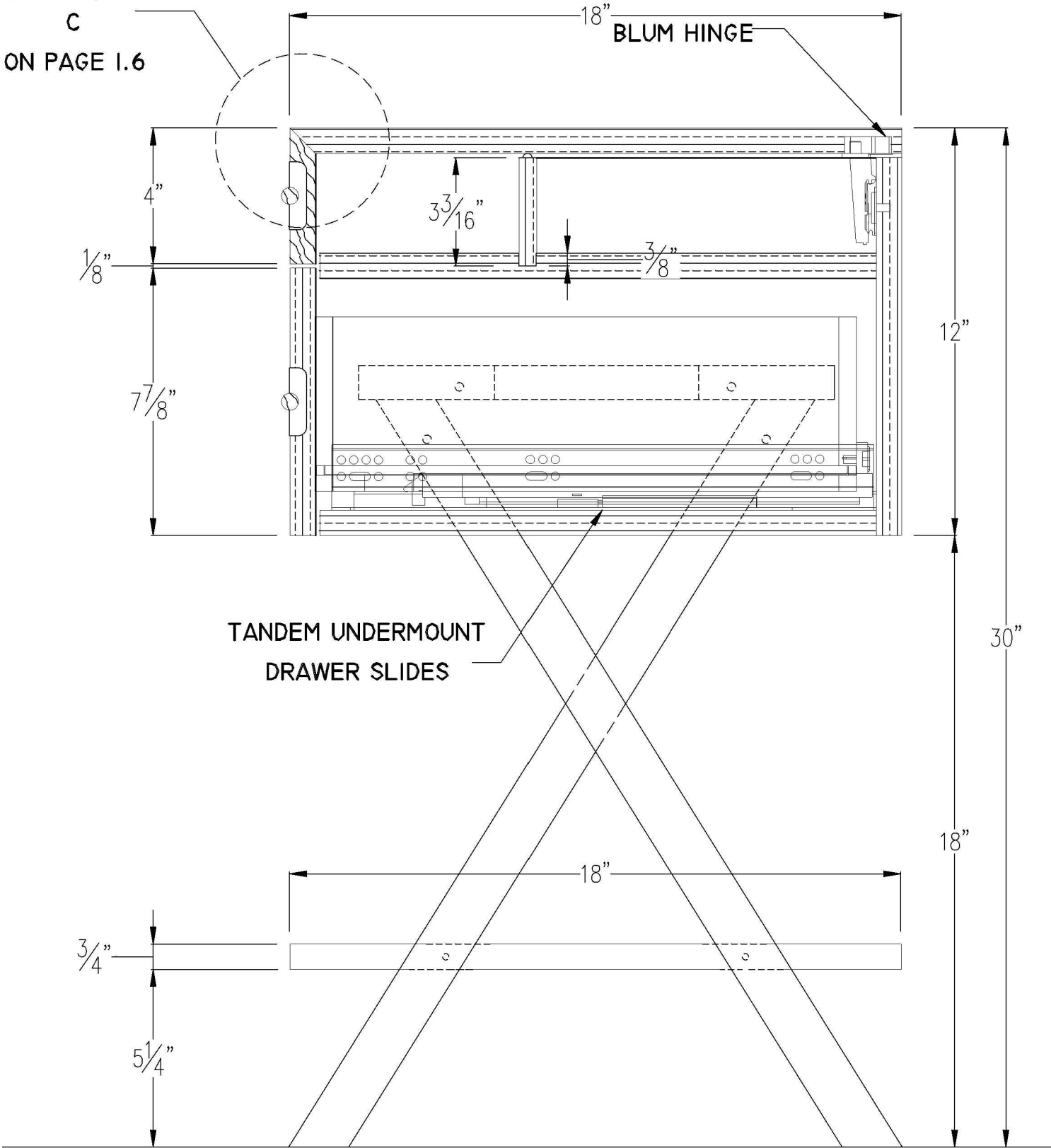
2015 SkillsUSA NLSC		
PROJECT		
ACCENT TABLE		
DRAWN BY: AJA	DATE: JUNE 2015	SCALE: N/A
NOTES		PAGE
		1.3



*NOTE: EDGEBAND ALL EXPOSED EDGES

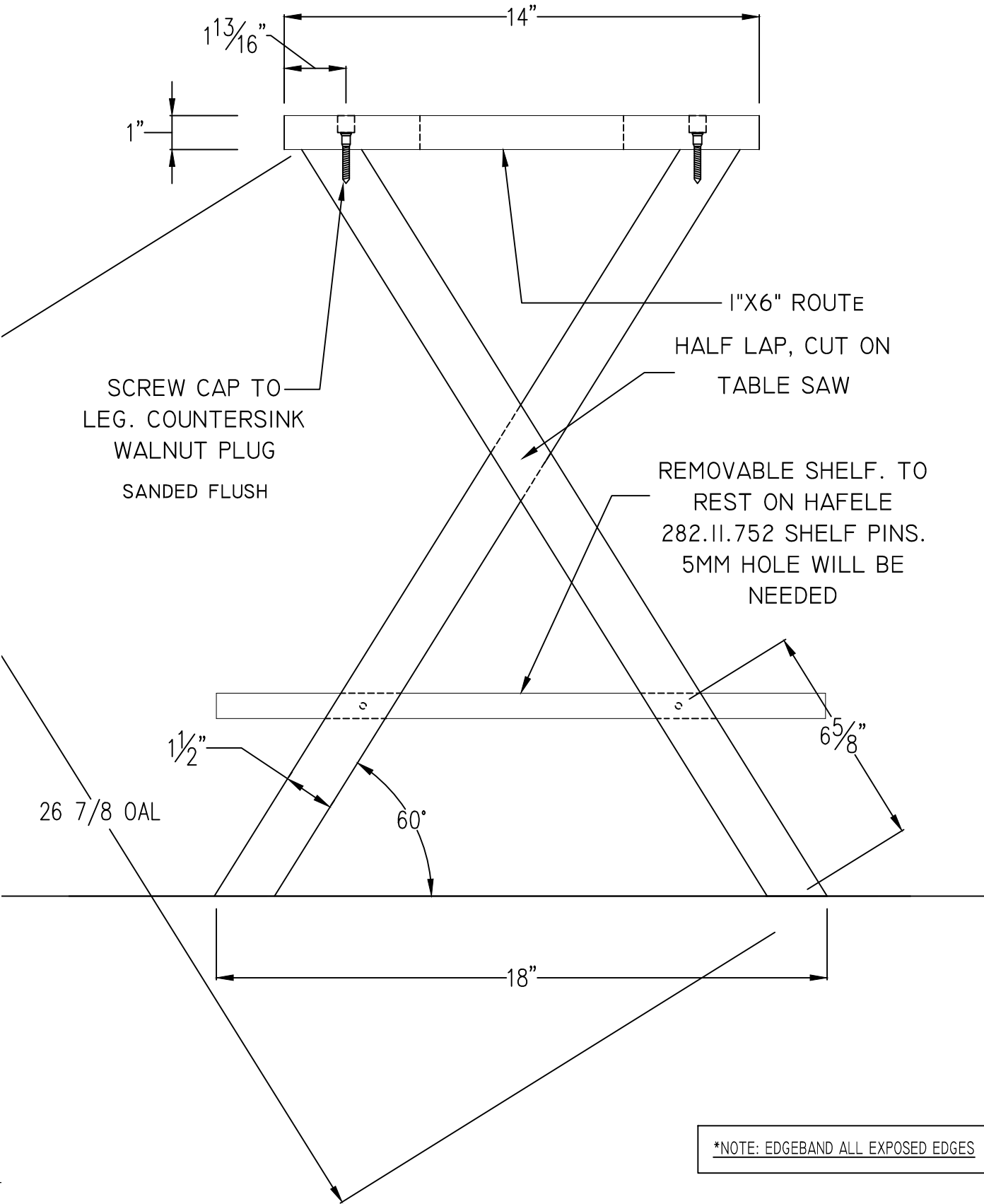
2015 SkillsUSA NLSC		
PROJECT		
ACCENT TABLE		
DRAWN BY: AJA	DATE: JUNE 2015	SCALE: N/A
NOTES		PAGE
		1.4

SEE DETAIL
C
ON PAGE I.6



VERTICAL SECTION
SCALE: 3"=12"

1



*NOTE: EDGE BAND ALL EXPOSED EDGES

SUPPORT LEG DETAIL
SCALE: 3"=12"

A

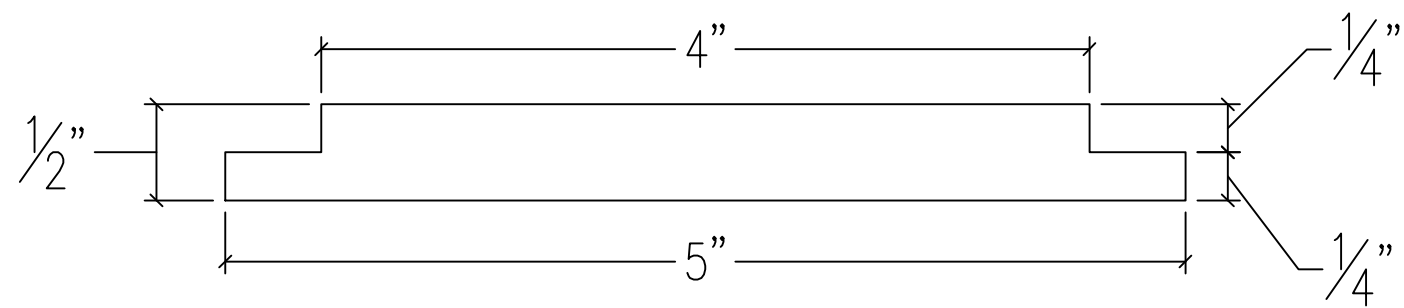
2015 SkillsUSA NLSC

PROJECT
ACCENT TABLE

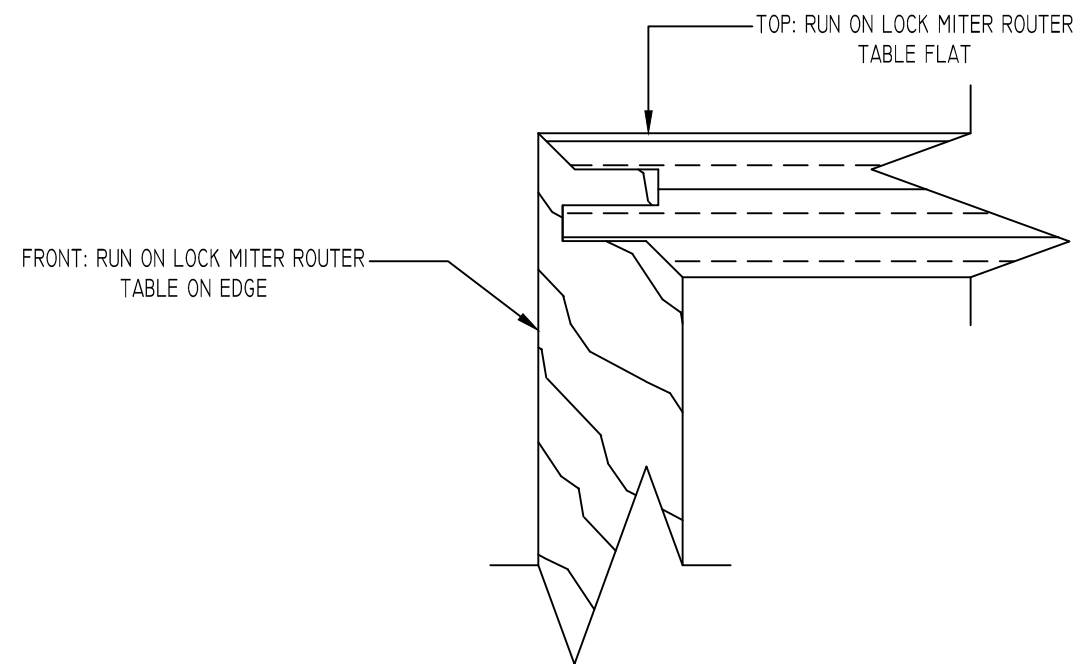
DRAWN BY: AJA | DATE: JUNE 2015 | SCALE: N/A

NOTES | PAGE

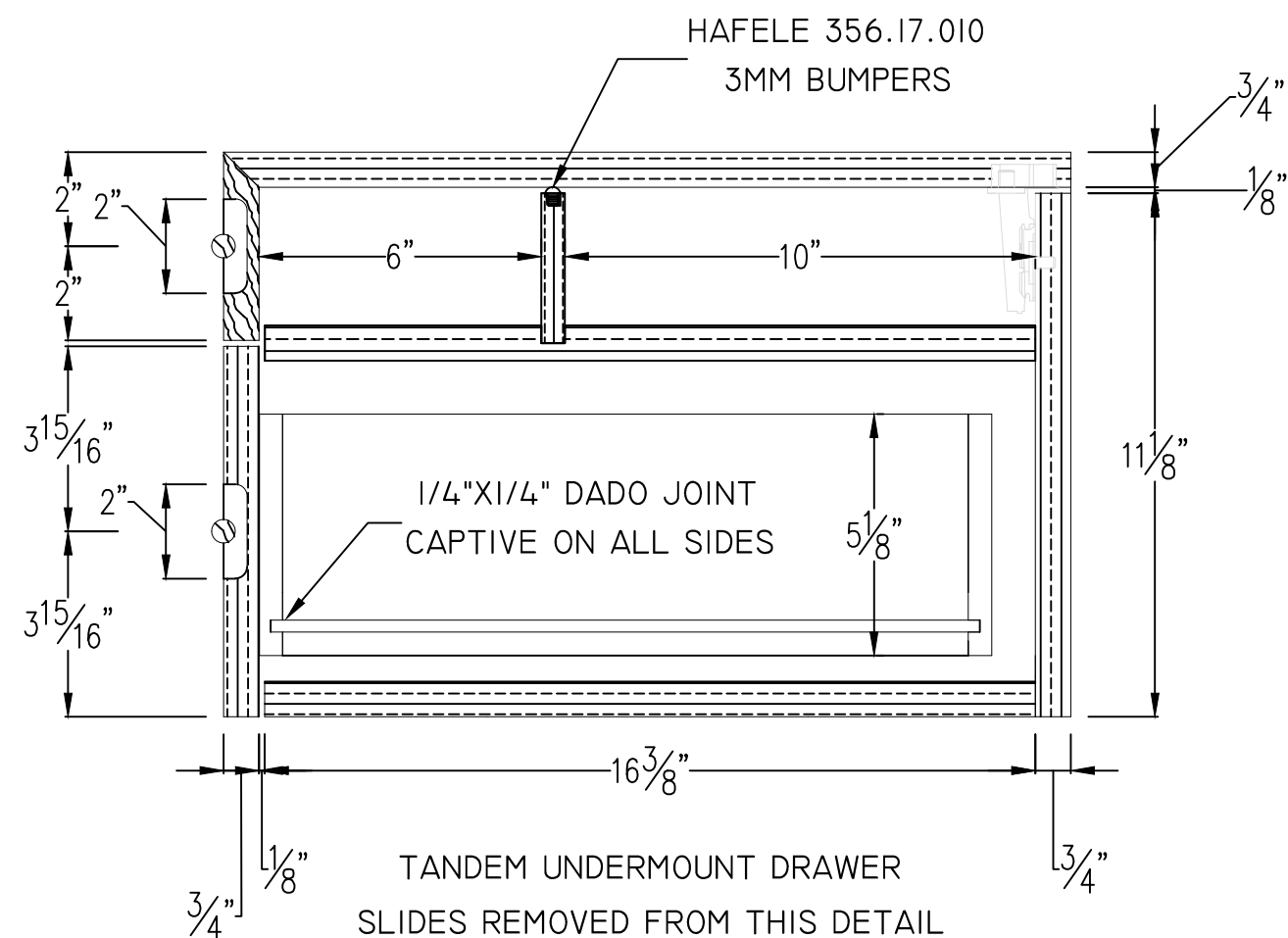
1.5



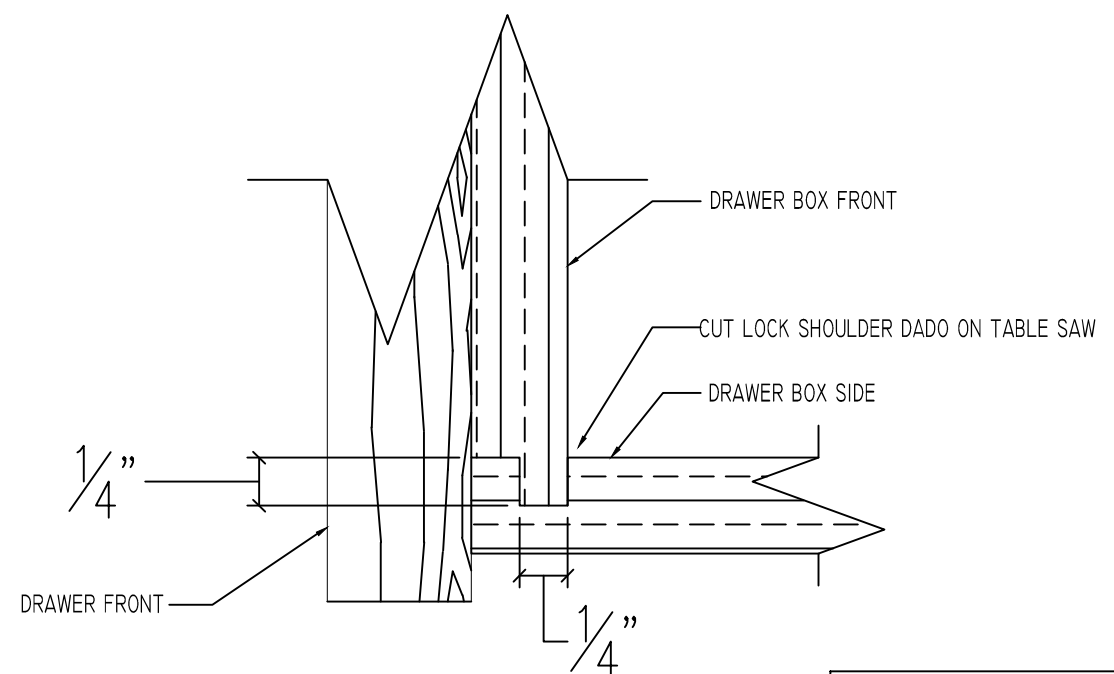
WALNUT DOWEL DETAIL
SCALE: 12"=12" (B)



LOCK MITER DETAIL
SCALE: 12"=12" (C)



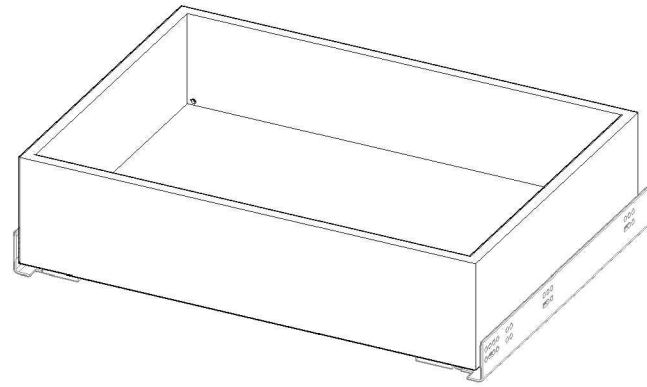
UPPER VERTICAL SECTION DETAIL
SCALE: 3"=12" (1)



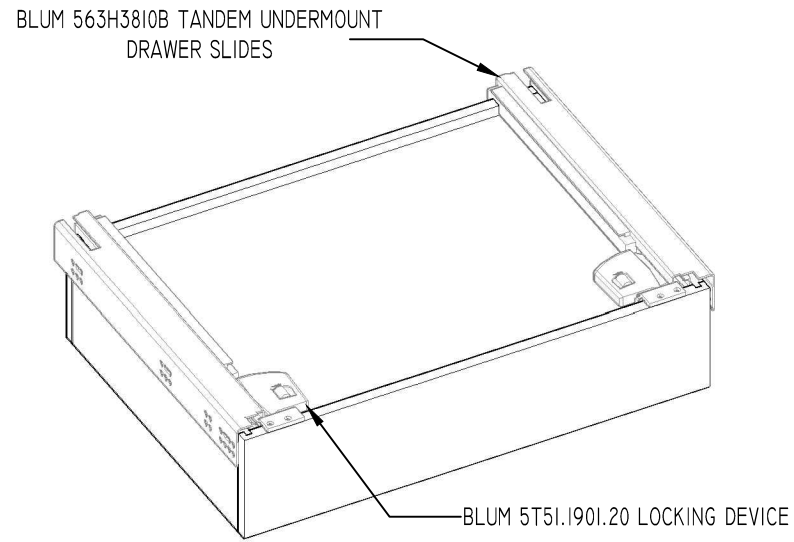
LOCK SHOULDER DETAIL
SCALE: 12"=12" (D)

*NOTE: EDGEBAND ALL EXPOSED EDGES

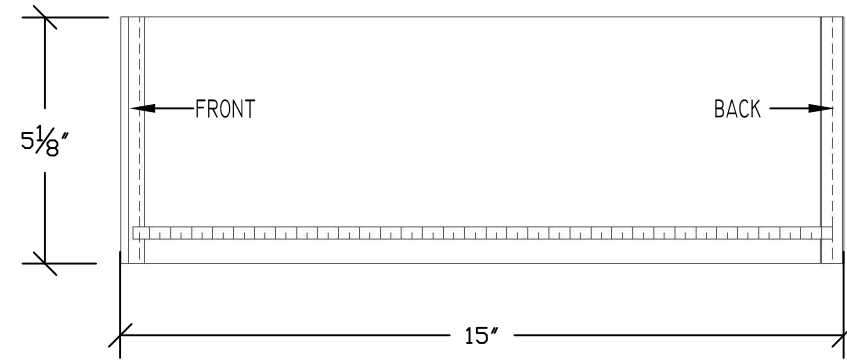
2015 SkillsUSA NLSC		
PROJECT ACCENT TABLE		
DRAWN BY: AJA	DATE: JUNE 2015	SCALE: N/A
NOTES		PAGE 1.6



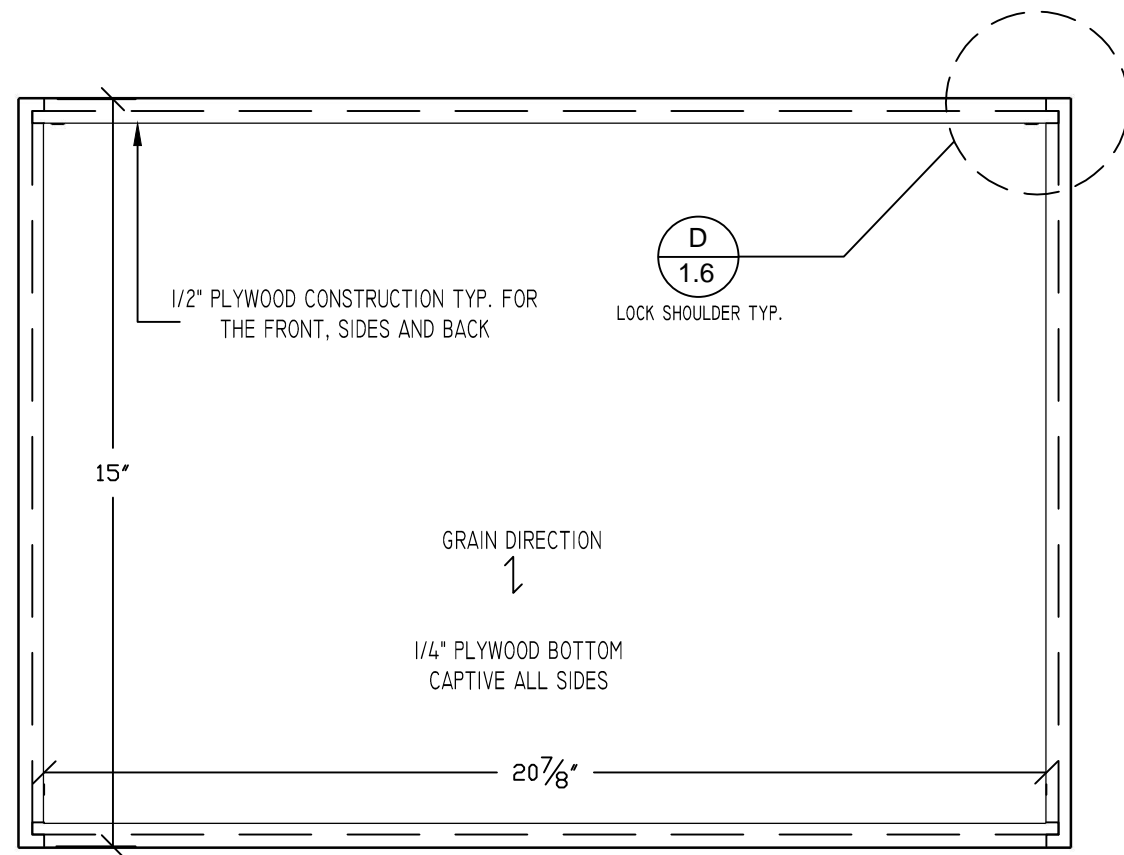
DRAWER BOX ISO (TOP)
SCALE: NTS



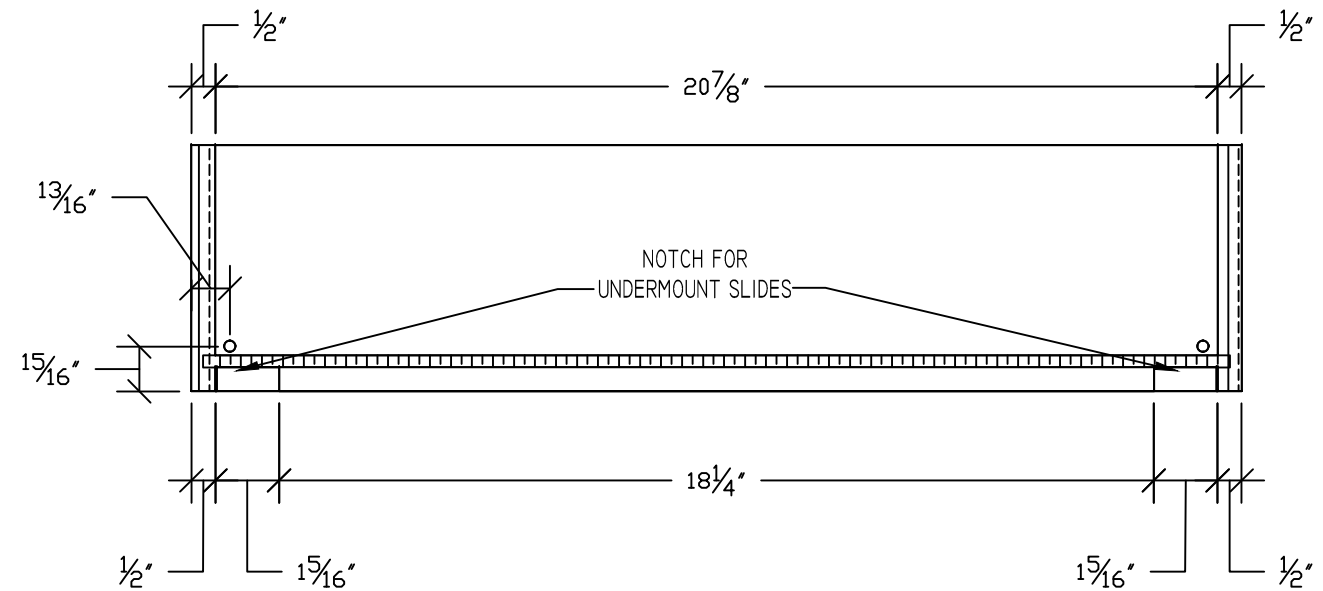
DRAWER BOX ISO (BOTTOM)
SCALE: NTS



DRAWER BOX SECTION
SCALE: 3"=12"



DRAWER BOX PLAN
SCALE: 3"=12"

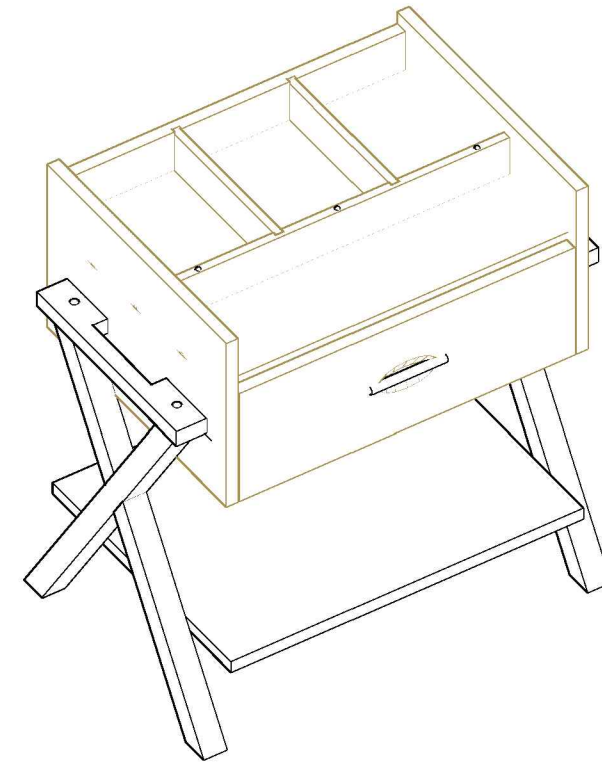


DRAWER BOX REAR
SCALE: 3"=12"

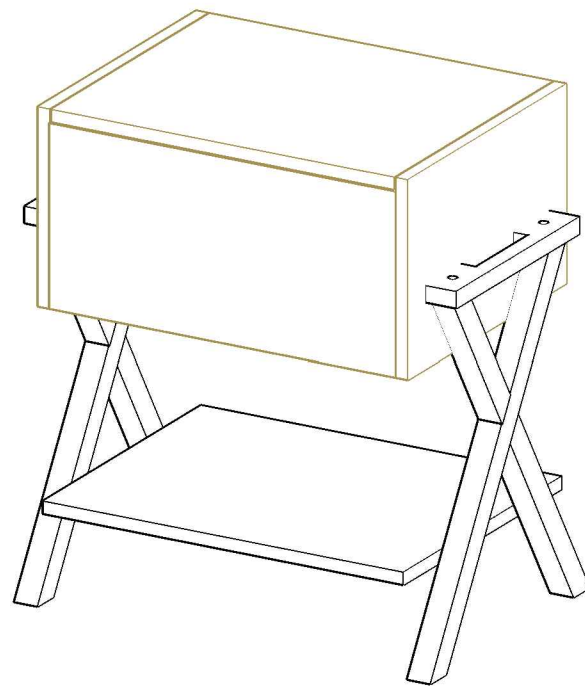
2015 SkillsUSA NLSC		
PROJECT ACCENT TABLE		
DRAWN BY: AJA	DATE: JUNE 2015	SCALE: N/A
NOTES		PAGE 1.7



UNIT ISOMETRIC VIEW
SCALE: NTS



UNIT ISOMETRIC VIEW WITH LID REMOVED
SCALE: NTS



UNIT ISOMETRIC REAR VIEW
SCALE: NTS

2015 SkillsUSA NLSC		
PROJECT ACCENT TABLE		
DRAWN BY: AJA	DATE: JUNE 2015	SCALE: N/A
NOTES		PAGE 1.8

CONTESTANT#

MATERIAL LIST - (DIMS MAY VARY)		
QTY	MATERIAL	SIZE
3 PC	3/4 MAPLE PLYWOOD	3/4 X 24 X 48
1 PC	1/4 MAPLE PLYWOOD	1/4 X 24 X 24
3 PC	PREFINISHED DRAWER STOCK	1/2 X 5-1/8 X 60
4 PC	SOLID MAPLE	1-1/2 X 1-1/2 X 36
1 PC	SOLID MAPLE	1 X 5 X 18
1 PC	SOLID MAPLE	3/4 X 5 X 24
1 PC	SOLID MAPLE	3/4 X 8 X 24
1 PC	WALNUT DOWEL	1/2 X 12
24 EA	#10 BISCUITS	
2 EA	WOOD SCREW 1"	
12 EA	WOOD SCREW 1-1/2"	
4 EA	5 MMSHELF SUPPORT	
4 EA	#6 X 5/8 SCREWS	
4 EA	5MM BUMPERS	

CUTTING LIST					
PART	MATERIAL	QTY	THICKNESS	WIDTH	LENGTH
LID TOP	MAPLE PLYWOOD				
SIDES	MAPLE PLYWOOD				
BACK	MAPLE PLYWOOD				
LID FRONT	MAPLE PLYWOOD				
DRAWER FRONT	MAPLE PLYWOOD				
BOTTOM	MAPLE PLYWOOD				
FIXED INSIDE SHELF	MAPLE PLYWOOD				
FRONT DIVIDER	PREFINISHED DRAWER STOCK				
INTERMEDIATE DIVIDERS	PREFINISHED DRAWER STOCK				
DRAWER FRONT AND BACK	PREFINISHED DRAWER STOCK				
DRAWER SIDES	PREFINISHED DRAWER STOCK				
DRAWER BOTTOM	MAPLE PLYWOOD				
HANDLE	SOLID MAPLE				
LEGS	SOLID MAPLE				
LOWER SHELF	MAPLE PLYWOOD				

CONTESTANT#

MATERIAL LIST - (DIMS MAY VARY)		
QTY	MATERIAL	SIZE
3 PC	3/4 MAPLE PLYWOOD	3/4 X 24 X 48
1 PC	1/4 MAPLE PLYWOOD	1/4 X 24 X 24
3 PC	PREFINISHED DRAWER STOCK	1/2 X 5-1/8 X 60
4 PC	SOLID MAPLE	1-1/2 X 1-1/2 X 36
1 PC	SOLID MAPLE	1 X 5 X 18
1 PC	SOLID MAPLE	3/4 X 5 X 24
1 PC	SOLID MAPLE	3/4 X 8 X 24
1 PC	WALNUT DOWEL	1/2 X 12
24 EA	#10 BISCUITS	
2 EA	WOOD SCREW 1"	
12 EA	WOOD SCREW 1-1/2"	
4 EA	5 MMSHELF SUPPORT	
4 EA	#6 X 5/8 SCREWS	
4 EA	5MM BUMPERS	

CUTTING LIST					
PART	MATERIAL	QTY	THICKNESS	WIDTH	LENGTH
LID TOP	MAPLE PLYWOOD				
SIDES	MAPLE PLYWOOD				
BACK	MAPLE PLYWOOD				
LID FRONT	MAPLE PLYWOOD				
DRAWER FRONT	MAPLE PLYWOOD				
BOTTOM	MAPLE PLYWOOD				
FIXED INSIDE SHELF	MAPLE PLYWOOD				
FRONT DIVIDER	PREFINISHED DRAWER STOCK				
INTERMEDIATE DIVIDERS	PREFINISHED DRAWER STOCK				
DRAWER FRONT AND BACK	PREFINISHED DRAWER STOCK				
DRAWER SIDES	PREFINISHED DRAWER STOCK				
DRAWER BOTTOM	MAPLE PLYWOOD				
HANDLE	SOLID MAPLE				
LEGS	SOLID MAPLE				
LOWER SHELF	MAPLE PLYWOOD				

JUDGE'S COPY

MATERIAL LIST - (DIMS MAY VARY)		
QTY	MATERIAL	SIZE
3 PC	3/4 MAPLE PLYWOOD	3/4 X 24 X 48
1 PC	1/4 MAPLE PLYWOOD	1/4 X 24 X 24
3 PC	PREFINISHED DRAWER STOCK	1/2 X 5-1/8 X 60
4 PC	SOLID MAPLE	1-1/2 X 1-1/2 X 36
1 PC	SOLID MAPLE	1 X 5 X 18
1 PC	SOLID MAPLE	3/4 X 5 X 24
1 PC	SOLID MAPLE	3/4 X 8 X 24
1 PC	WALNUT DOWEL	1/2 X 12
24 EA	#10 BISCUITS	
2 EA	WOOD SCREW 1"	
12 EA	WOOD SCREW 1-1/2"	
4 EA	5 MMSHELF SUPPORT	
4 EA	#6 X 5/8 SCREWS	
4 EA	5MM BUMPERS	

CUTTING LIST - MASTER					
PART	MATERIAL	QTY	THICKNESS	WIDTH	LENGTH
LID TOP	MAPLE PLYWOOD	1	3/4	18	22-1/4
SIDES	MAPLE PLYWOOD	2	3/4	12	18
BACK	MAPLE PLYWOOD	1	3/4	11-1/8	22-1/2
LID FRONT	SOLID MAPLE	1	3/4	4	22-1/4
DRAWER FRONT	SOLID MAPLE	1	3/4	7-7/8	22-1/4
BOTTOM	MAPLE PLYWOOD	1	3/4	16-3/8	22-1/2
FIXED INSIDE SHELF	MAPLE PLYWOOD	1	3/4	16-3/8	22-1/2
FRONT DIVIDER	PREFINISHED DRAWER STOCK	1	1/2	3-3/16	22-1/2
INTERMEDIATE DIVIDERS	PREFINISHED DRAWER STOCK	2	1/2	2-13/16	10-1/2
DRAWER FRONT AND BACK	PREFINISHED DRAWER STOCK	2	1/2	5-1/8	21-7/8
DRAWER SIDES	PREFINISHED DRAWER STOCK	2	1/2	5-1/8	15
DRAWER BOTTOM	MAPLE PLYWOOD	1	1/4	21-3/8	14-1/2
HANDLE	SOLID MAPLE	2	1	2	14
LEGS	SOLID MAPLE	4	1-1/2	1-1/2	26-7/8
LOWER SHELF	MAPLE PLYWOOD	1	3/4	18	23-7/8

2015 SkillsUSA NLSC		
PROJECT ACCENT TABLE		
DRAWN BY: AJA	DATE: JUNE 2015	SCALE: N/A
NOTES		PAGE JUDGE